

Canon



Aplio i800

Intuitive. Intelligent.
Innovative.

General Imaging



Aplio i800



Magic inside

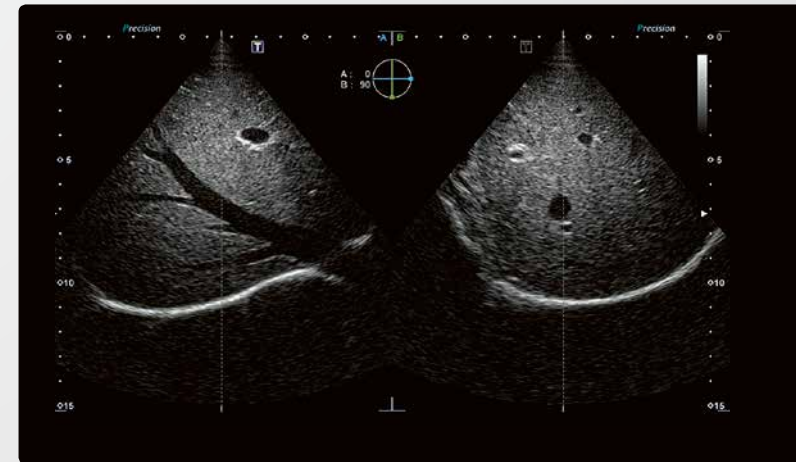
Aplio i800 is designed to deliver outstanding clinical precision and departmental productivity. Crystal-clear images with enhanced resolution and penetration as well as an abundance of expert tools help you obtain your diagnostic answer quickly and reliably.



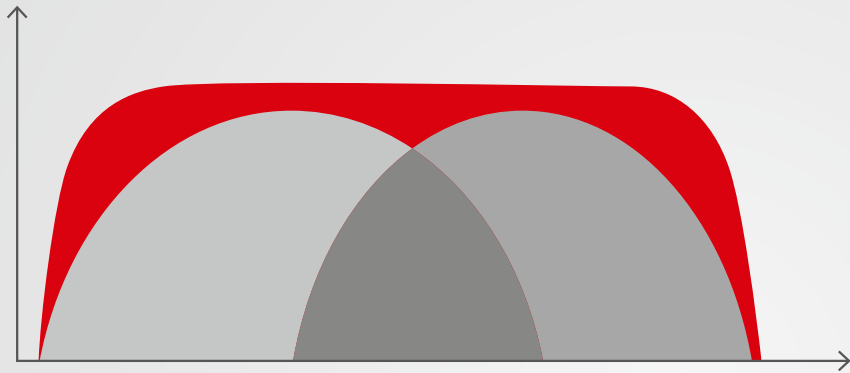
Crystal-clear imaging, superior versatility

From the smallest to the toughest patients, Aplio's revolutionary iBeam architecture with dramatically increased processing power* provides unprecedented imaging clarity and definition while significantly enhancing penetration.

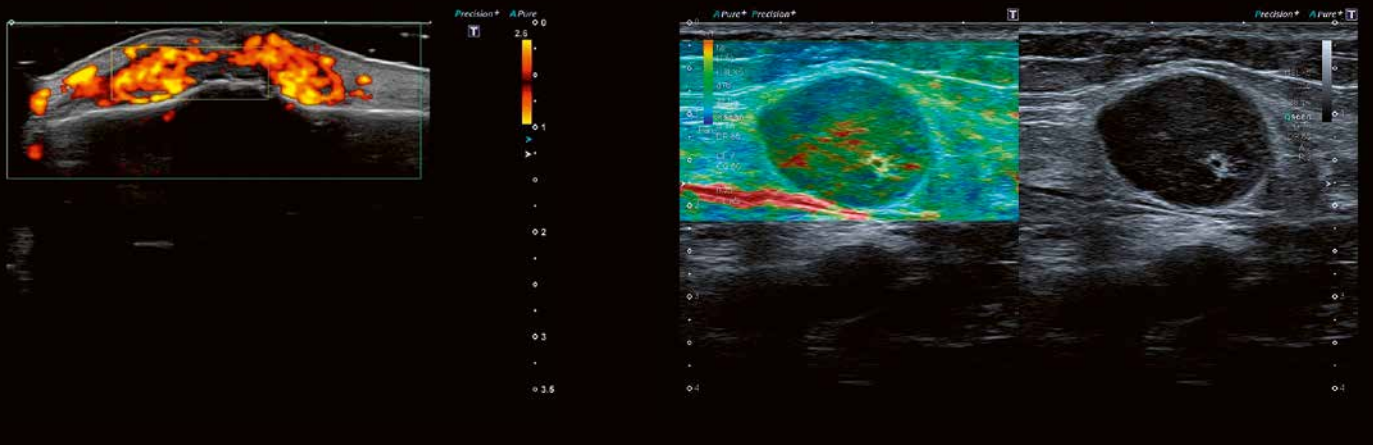
Aplio's intelligent Dynamic Micro-Slice (iDMS) technology increases clinical accuracy and reveals more detail in all depths by electronically sharpening the imaging slice thickness.



Better diagnostics starts here



Aplio's ultra-wideband i-series transducers cover the same bandwidth as two conventional transducers, providing superior sensitivity and resolution for both near and far field. While helping to reduce cost, this revolutionary transducer design can provide better imaging regardless of the patient condition.



Ultra-Wideband
Convex i8CX1



Ultra-Wideband
Linear i18LX5



Ultra-Wideband
Volume matrix i6SVX2



Enjoy the perfect picture

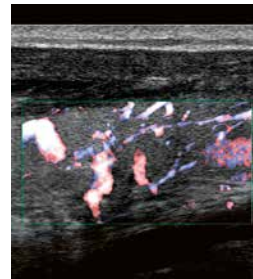
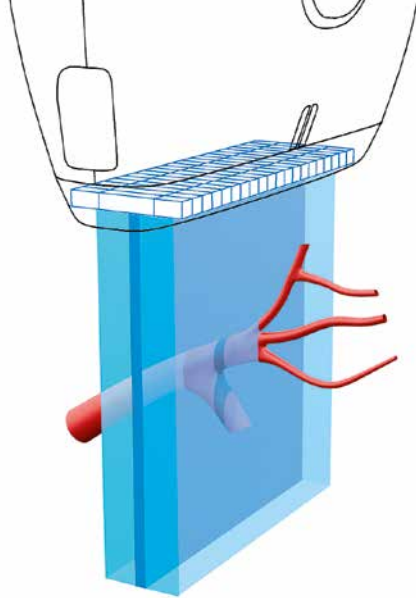
Each of Aplio's unique imaging technologies provides you with better image quality by reducing clutter, strengthening signal and improving visualization. All functions work hand in hand with other imaging modes for greater uniformity across all applications.



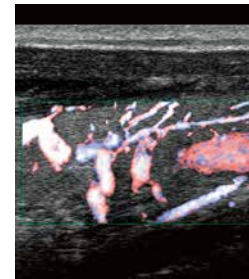
Precision+ offers outstandingly smooth images with sharpened outline of anatomical structures and lesions, enhanced image uniformity and reduced clutter – even in high BMI patients.



ApliPure+ compounding delivers increased imaging contrast and reduced speckle noise to improve visualization.



Conventional



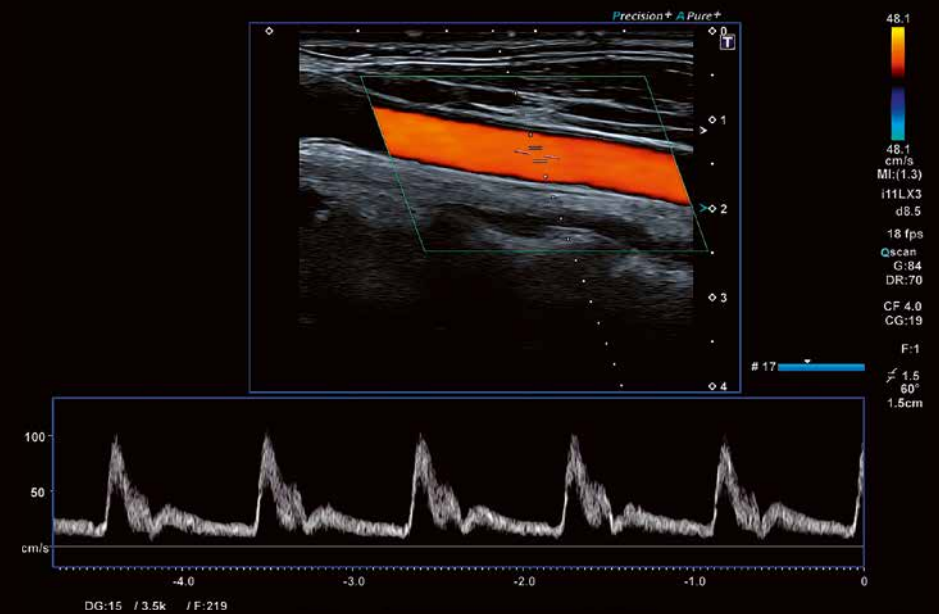
Adaptive slice thickness

Optimal imaging in each mode

Aplo's adaptive Slice Thickness Control option helps you achieve optimal resolution and sensitivity simultaneously on each imaging mode. So while you improve the continuity of blood flow imaging with a wider beam, you can maintain the best possible B-mode quality and resolution at the same time.



Differential Tissue Harmonics provides harmonic images of unsurpassed spatial resolution, alongside greatly enhanced penetration.

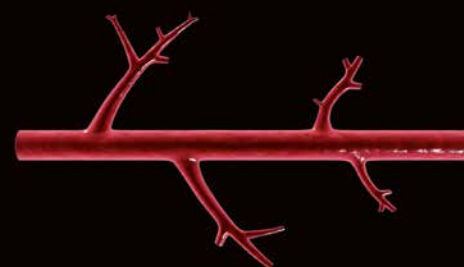


Aplo's wideband transducer and signal processing technology delivers outstanding sensitivity, penetration and spatial resolution for all Doppler modes.

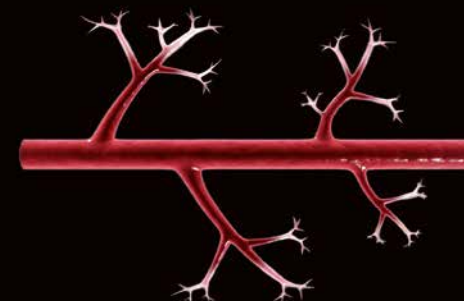


Seeing the unseen with SMI

Experience color flow imaging with unmatched detail and definition on Aplio i800. Superb Micro-vascular Imaging (SMI) expands the range of visible blood flow to visualize low-velocity microvascular flow never before seen with diagnostic ultrasound.



Conventional

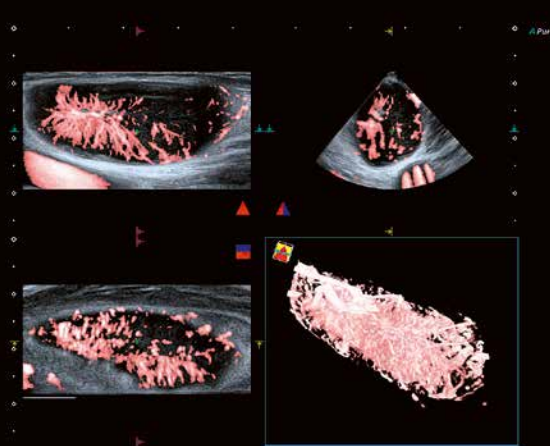


SMI

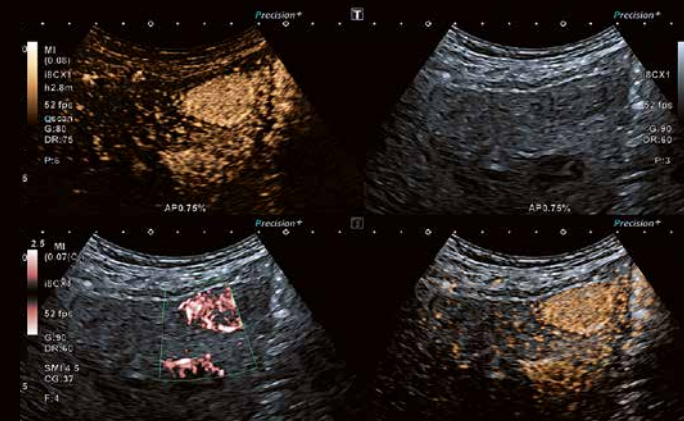
Traditional color Doppler imaging (left) removes clutter from the images by suppressing low-velocity components, resulting in a loss of flow visualization in tiny vessels. SMI (right) separates flow from overlaying tissue motion effectively, while preserving even the subtlest low-flow components with unmatched detail and definition.



SMI's level of vascular visualization, combined with high frame rates, advances diagnostic confidence when evaluating the micro-vascularity of organs and lesions.



Smart Sensor 3D allows you to acquire accurate 3D volumes with a standard linear or convex transducer, also in SMI mode.



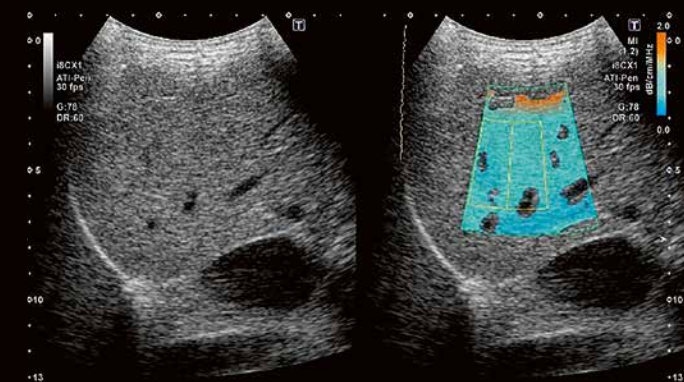
The system's quad mode capability depicts up to four different modes including SMI or CEUS simultaneously in real-time for better diagnostic insight.

Increase your confidence, expand your capability

Early detection and reliable characterization of lesions help optimize your patients' clinical pathway. Aplio's extensive suite of advanced imaging and quantification functions can help you obtain definite answers quickly and with confidence.



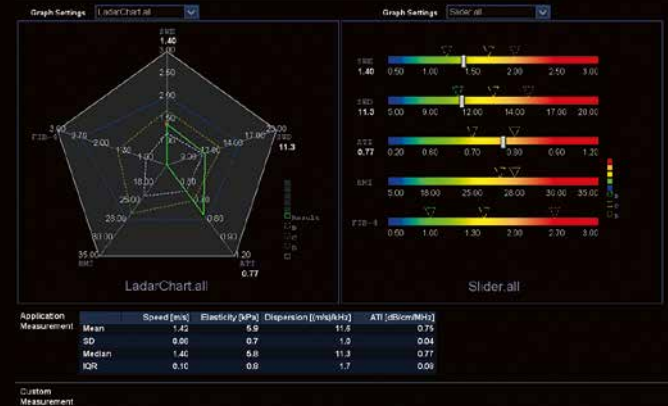
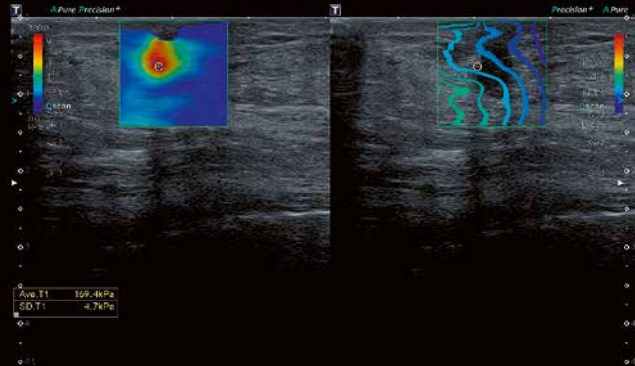
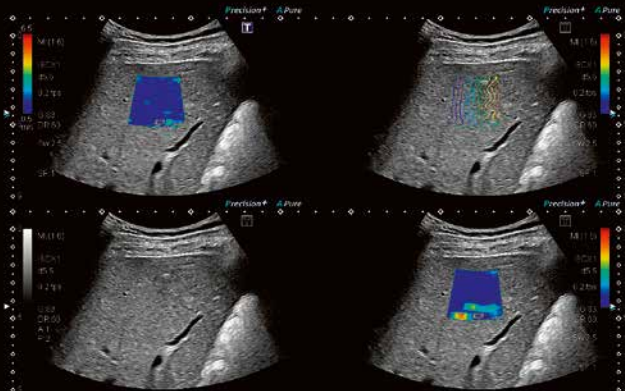
Aplio's comprehensive CEUS imaging and quantification package allows you to assess perfusion dynamics in a wide range of clinical settings, including a wide variety of specialized exams.



Attenuation imaging provides the capability to visualize and measure the attenuation coefficient of fatty liver tissue. Advanced filters remove structures such as vessels and calcifications from the measurements, leading to robust results.

Better intercostal access

Aplio's thin convex transducers are ideally suited for intercostal scanning. The new biopsy attachment with minimized blind area and selectable puncture angle facilitates optimal puncture conditions for each patient.



Canon Medical Systems' shear wave technology provides a quantitative measure and realtime display of tissue elasticity in a variety of clinical settings ranging from abdominal to small parts examinations.

Smart Maps help you visualize and quantify shear wave propagation in realtime. Aplio's unique propagation map is a powerful and intuitive tool to visually assess the quality of an elastogram.

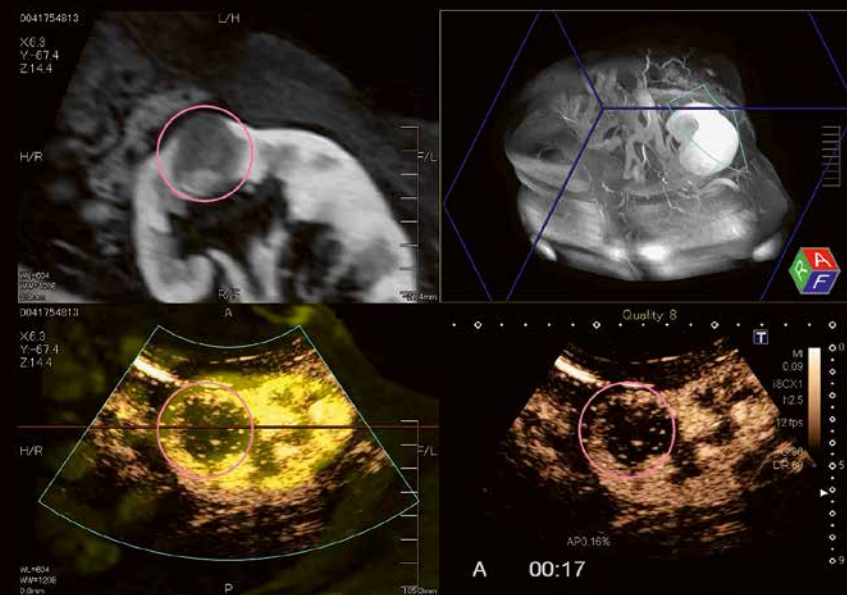
The system's integrated multi-parametric reporting tool for liver imaging provides a comprehensive overview for easy comparison of all available metrics.

Navigate with ease, treat with confidence

Aplio provides a wide range of tools for advanced imaging and interventions. Dedicated transducers and an abundance of imaging and navigation tools help you enhance confidence and accuracy during interventional procedures and their follow-up.

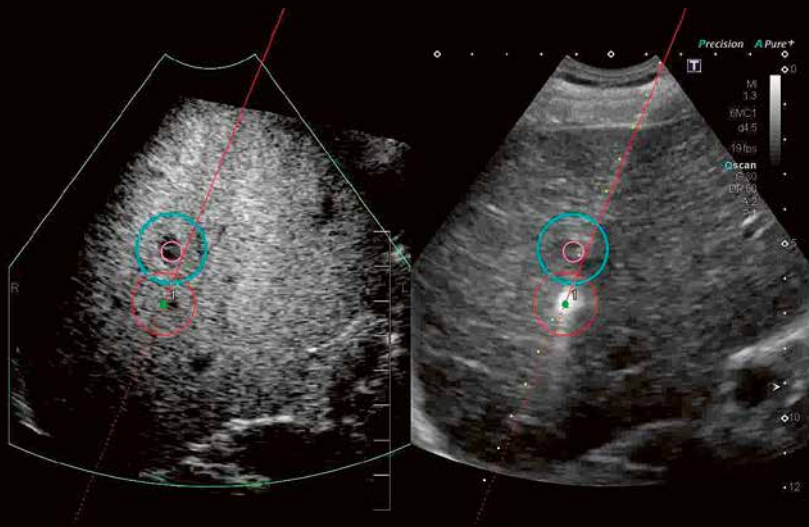
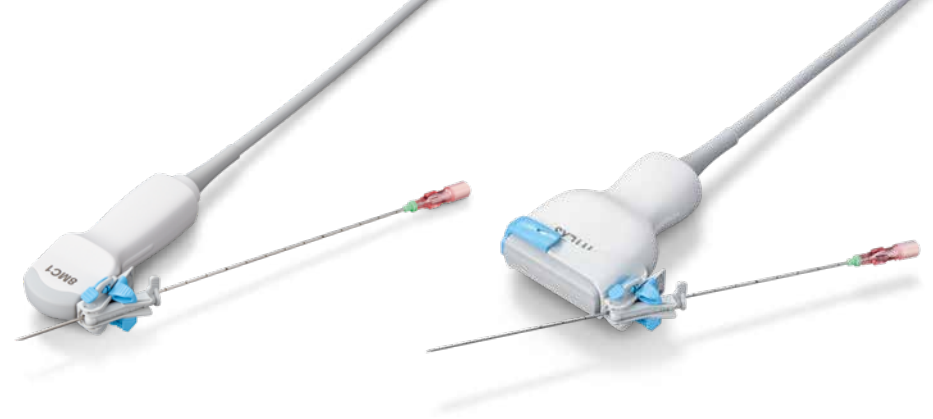


Smart Fusion merges realtime ultrasound with previously acquired CT, PET-CT, MR or ultrasound data, allowing you to identify and compare lesions with ease and to navigate complex anatomy securely.

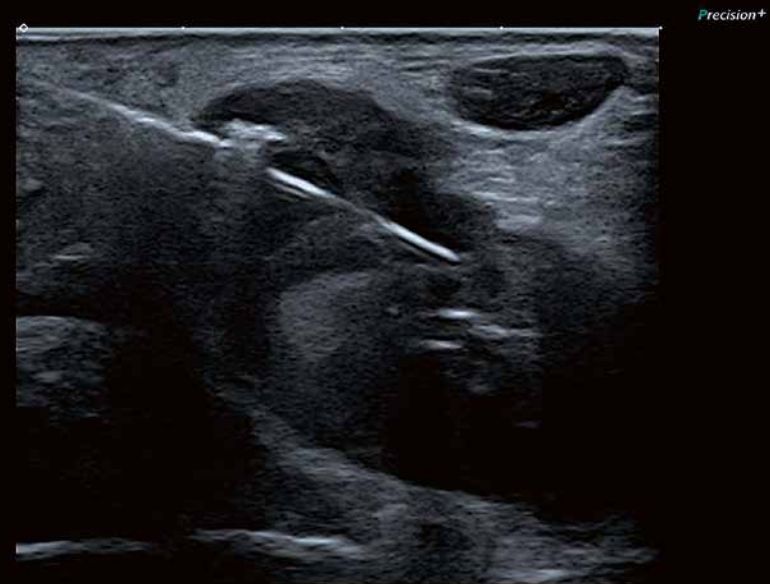


For comprehensive evaluation, Smart Fusion allows you to work in multiple imaging modes, including color Doppler and CEUS. The concise quad display shows the live ultrasound image in sync with multiple views of the pre-loaded data.

Aplio i-series is compatible with a variety of needle guides with multi-angle or free angulation capability, either using brackets or directly mounted on the transducer to ensure easy handling with high precision and minimal blind zone.



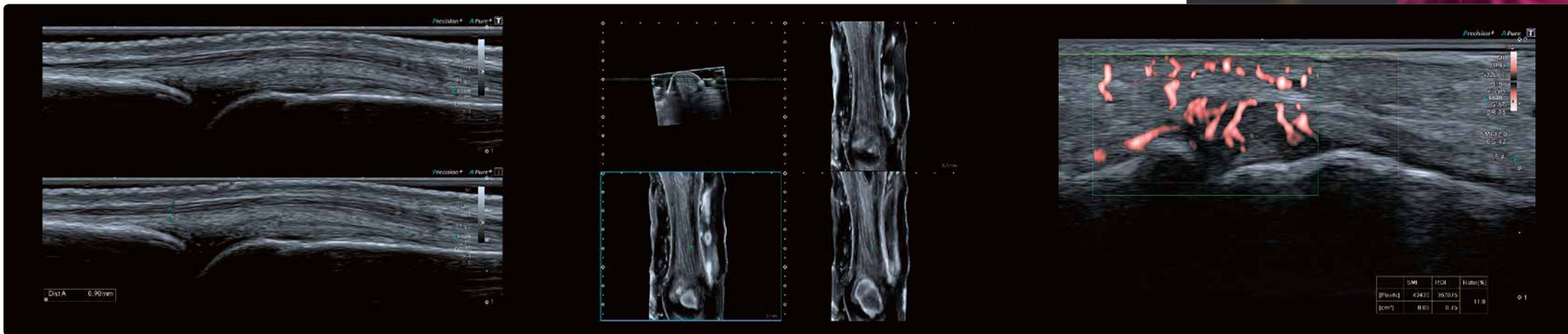
Smart Navigation helps you guide needle tips securely and with higher confidence. Color-coded virtual biopsy lines make it easy to track needles in both the live ultrasound and the adjacent fusion image.



Canon Medical Systems' BEAM technology provides clearer visualization of biopsy needles in the live image. The function works with all common needle sizes and selects the optimal enhancement automatically.

Amazing detail, outstanding versatility

Standard and specialized ultra-wideband transducers, with up to 33 MHz and intelligent Dynamic Micro-Slice technology, provide superior detail and definition in the near field for a wide range of examinations.



The ultra-high frequency transducers' outstanding resolution can help identify fine detail such as layered structures and small lesions.

Smart 3D is a simple way to add volume-imaging capability to Aplio's convex and linear transducers, supporting all modes including SMI or shear wave volume imaging.

Advanced technologies like elastography or SMI are also available on specialty transducers for advanced exams such as the quantitative assessment of inflammation in small joints.



Ultra-Wideband
Hockeystick i22LH8



Ultra-Wideband
Linear i24LX8



Ultra-high Frequency
Linear i33LX9



Designed with our users in mind



Smaller and lighter, Aplio i800 is easy to maneuver. With over 36 cm panel height adjustment, lateral slide and a fully articulating monitor arm, Aplio i800 helps you to optimally adjust the console to virtually any scanning position.

Aplio makes your work flow

Aplio provides a host of intelligent workflow support and automation tools, helping you to achieve rapid results with consistent high quality regardless of the patient condition.

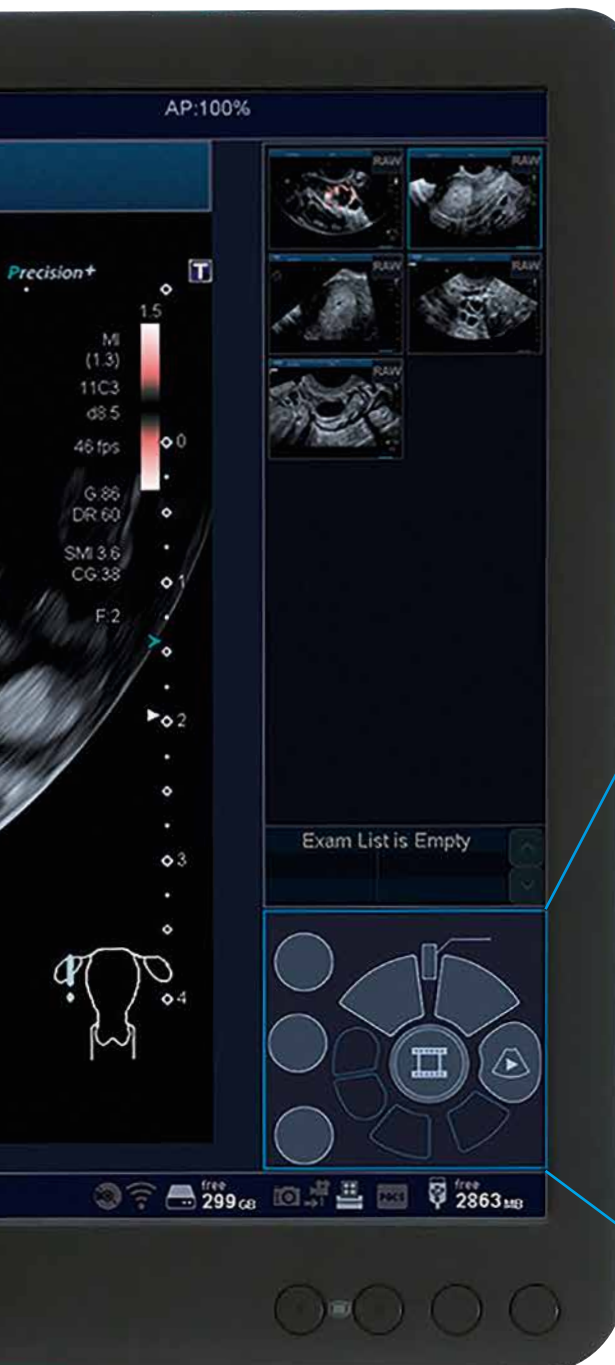
Access all areas

Aplio's large, tablet-style touch screen with three interactive zones allows you to quickly browse and select the desired function, while the rest of the display remains unchanged.



Switch to auto-pilot

Aplio's context-sensitive user interface is designed to make your imaging task simpler and quicker. While automated settings can deal with routine clinical needs, you always retain control over all imaging parameters when needed.



The mode-sensitive on-screen navigation for the central trackball boosts your workflow and efficiency. By visually guiding you through the exam, it allows you to adapt and operate the system within a few minutes.

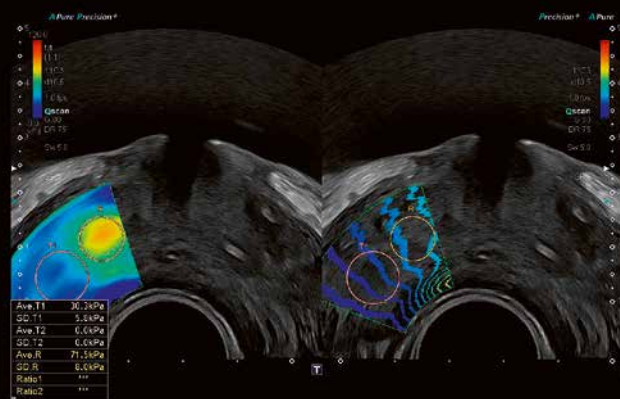
Go wireless to gain better access

Aplio i-series allows you to remotely operate the system from a wireless tablet. This is especially helpful during MSK and vascular exams where it can be difficult to scan a patient and reach the panel at the same time, without losing sight of the monitor.

The wireless tablet is also ideal for scanning in mobile environments, sterile situations and for infection control to protect the system from possible contamination.



Realtime Quick Scan allows you to achieve greater consistency in your exams by ensuring that superb image quality is the benchmark at all times.



Thanks to Aplio's embedded raw data functionality you can optimize, review, analyze and report your clinical data anytime with no loss of functionality.



A range of automated measurement and analysis tools help you increase accuracy, consistency and speed of your exams.

***Aplio** i-series*



CANON MEDICAL SYSTEMS EUROPE B.V.

<https://eu.medical.canon>

©Canon Medical Systems Corporation 2018. All rights reserved.
Design and specifications subject to change without notice.
Model number: TUS-AI800
MCAUS0268ECC 2019-01 CMSE/Printed in Europe

Canon Medical Systems Corporation meets internationally recognized standards for Quality Management System ISO 9001, ISO 13485.
Canon Medical Systems Corporation meets the Environmental Management System standard ISO 14001.

Aplio, ApliPure and Made for Life are trademarks of Canon Medical Systems Corporation.

Disclaimer: Some features presented in this brochure may not be commercially available on all systems shown or may require the purchase of additional options. Please contact your local Canon Medical Systems representative for details.

Made For life